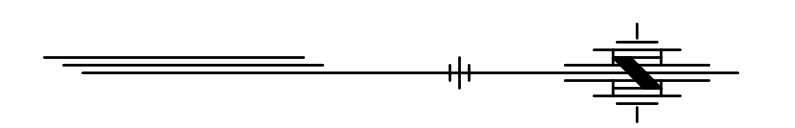




- LEGEND**
- Construction Zone
 - Sign - 1 Post
 - Type II Barricade
 - Type III Barricade
 - Channelizer



G:\Shared drives\231016\CADD\Year 2\231016-PH2 Traffic Control Ph1b.dwg

NO.	DATE:	REVISION	BY:	APP'D

DRAWN BY: ATP
 APP'D BY: MJM

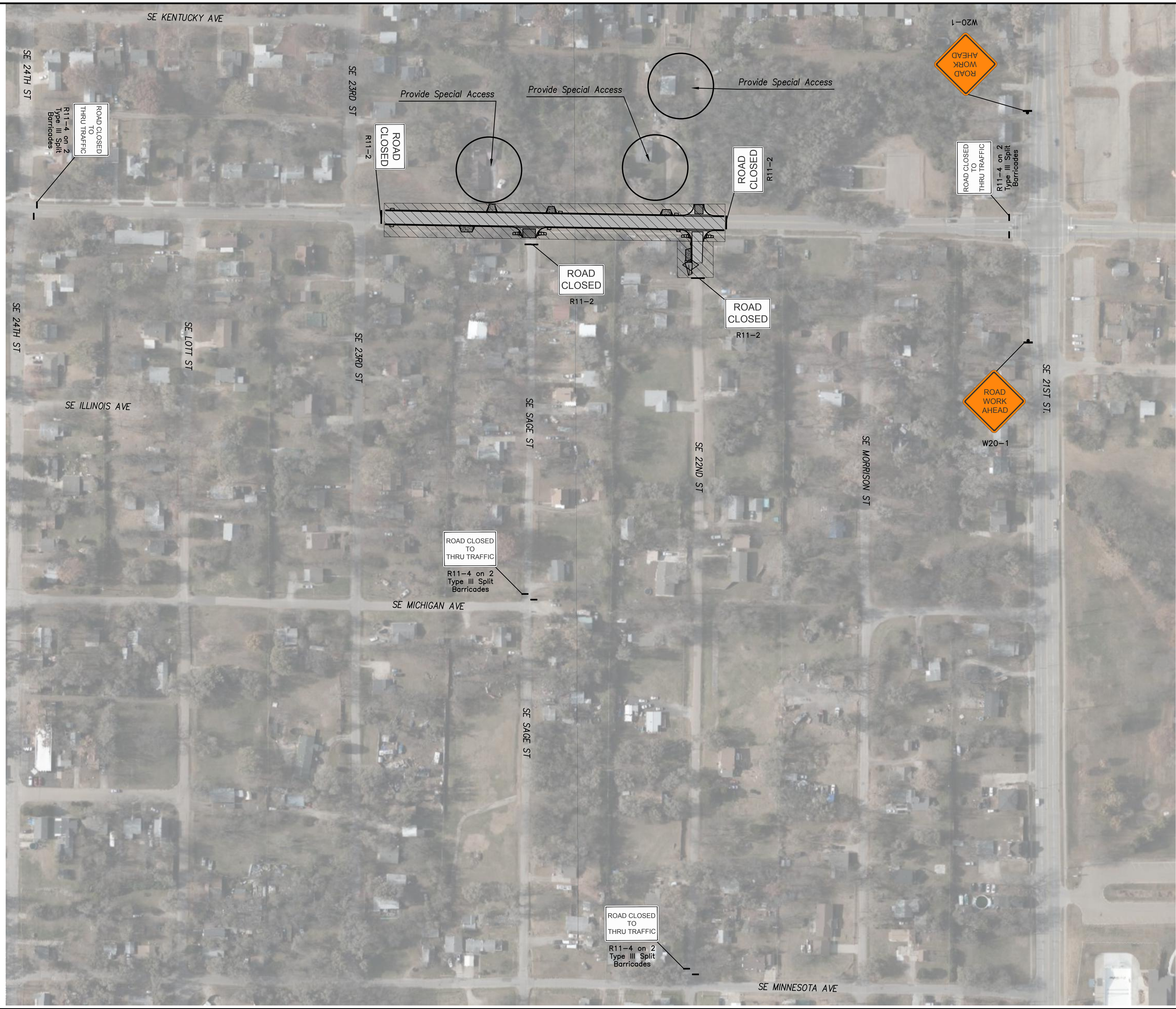
CFS ENGINEERS
 cfse.com

TOPEKA
 Public Works
 ENGINEERING
 620 SE MADISON St. • 2nd Floor • TOPEKA, KS 66607
 Phone: (785) 368-3842 • Fax: (785) 368-3881

STREET IMPROVEMENT
 CITY OF TOPEKA
 SE INDIANA STREET

TRAFFIC CONTROL
 PHASE 1-B

DATE: Feb. 2026
 SHEET: 33 of 66
 PROJ.: 841099.09
 501107.10

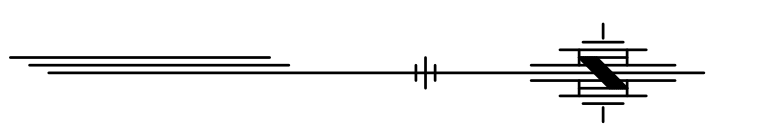


Contractor shall coordinate special daily access provisions for the homeowners at the indicated properties. Methods may include rocking back daily access aisles from SE Sage Street and SE 22nd Street. Special Daily Access shall not be paid for directly, but shall be considered subsidiary to the bid item "Driveway Entrance Access Provisions - Lump Sum". Addresses included in the Lump Sum Price are indicated on the map with circles and are specifically listed as follows:

- 2425 SE INDIANA AVE - M-F shutdown allowed without time limits. Weekends must remain accessible.
- 1225 SE 22ND ST - Daily shutdown limitations 8:30am to 4:30pm.
- 2201 SE INDIANA AVE - Daily shutdown limitations 8:30am to 4:30pm.
- 2225 SE INDIANA AVE - Daily shutdown limitations 8:30am to 4:30pm.

NOTE: The church at 2425 SE INDIANA AVE is included as needed for weekend use only and does not require daily access. All other properties have alley access and shall not receive special driveway access without advance approval by the City of Topeka.

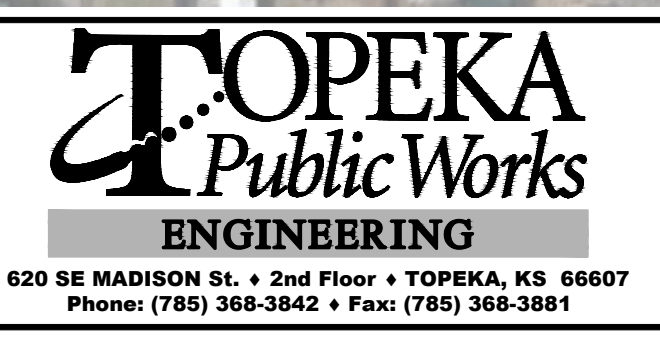
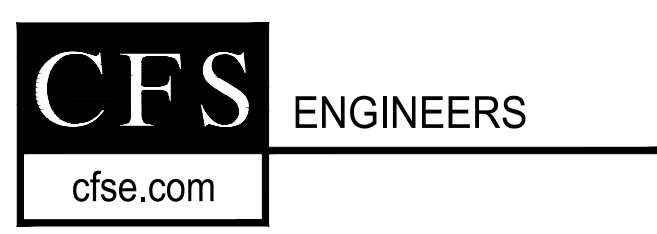
- LEGEND**
- Construction Zone
 - Sign - 1 Post
 - Type II Barricade
 - Type III Barricade
 - Channelizer



G:\Shared drives\231016\CADD\Year 23\231016-PH2 Traffic Control Ph1a.dwg

NO.	DATE:	REVISION	BY:	APP'D

DRAWN BY: AIP
APP'D BY: MJM

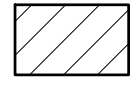






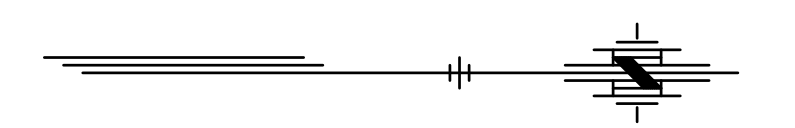
STREET IMPROVEMENT
CITY OF TOPEKA
SE INDIANA STREET

TRAFFIC CONTROL
PHASE 1-C

DATE: Feb. 2026
SHEET: 34 of 66
PROJ.: 841099.09
501107.10



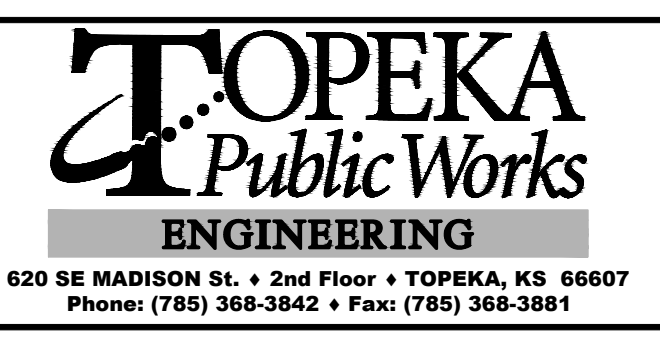
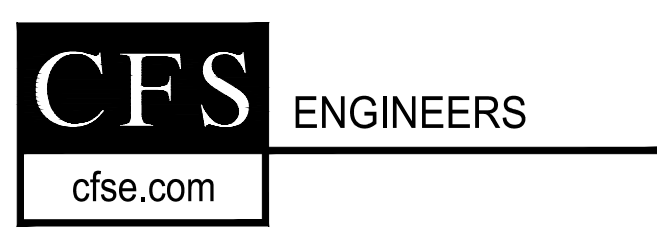
- LEGEND**
-  Construction Zone
 -  Sign - 1 Post
 -  Type II Barricade
 -  Type III Barricade
 -  Channelizer



G:\Shared drives\231016\CADD\Year 2\231016-PH2 Traffic Control Ph1e.dwg

NO.	DATE:	REVISION	BY:	APP'D

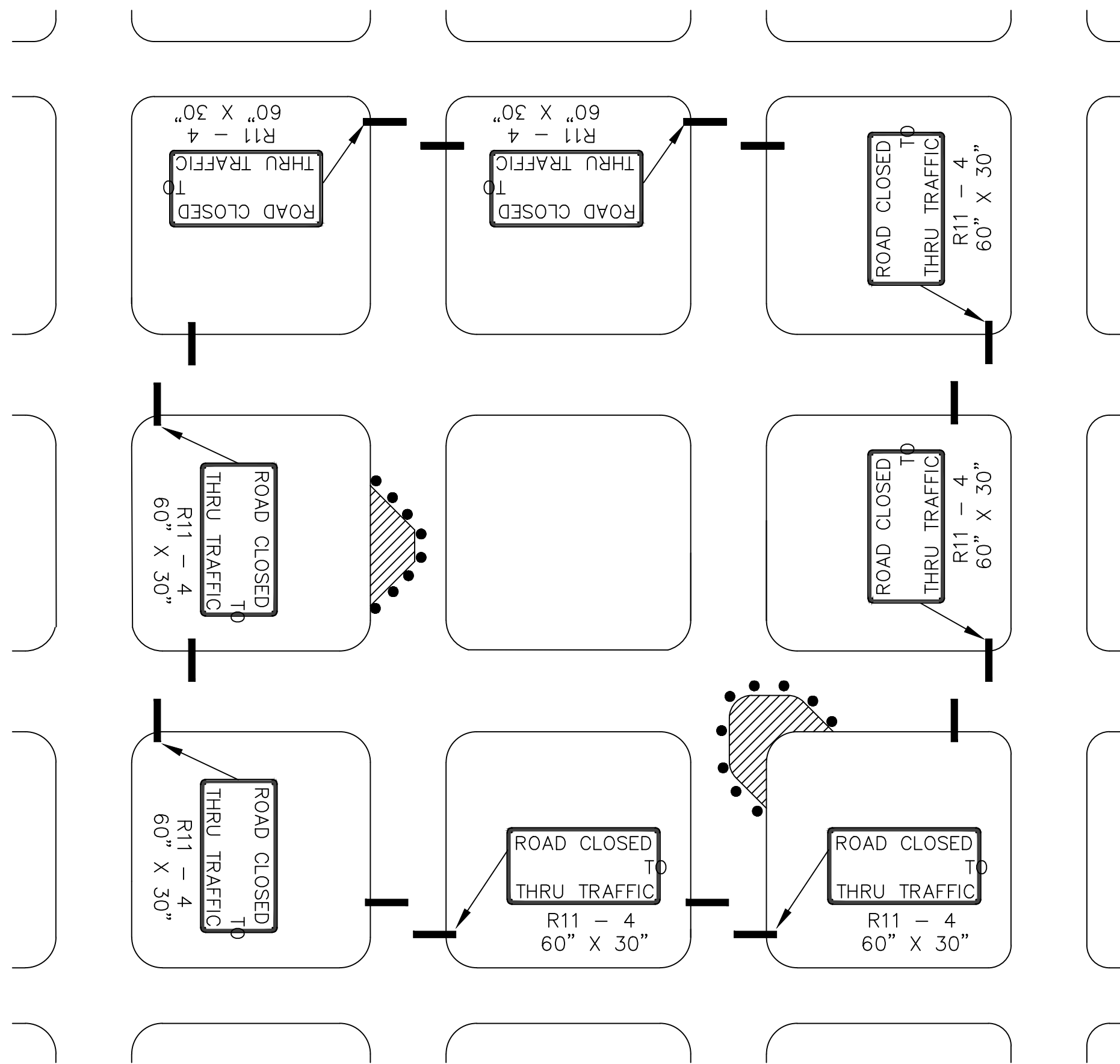
DRAWN BY: ATP
 APP'D BY: MJM



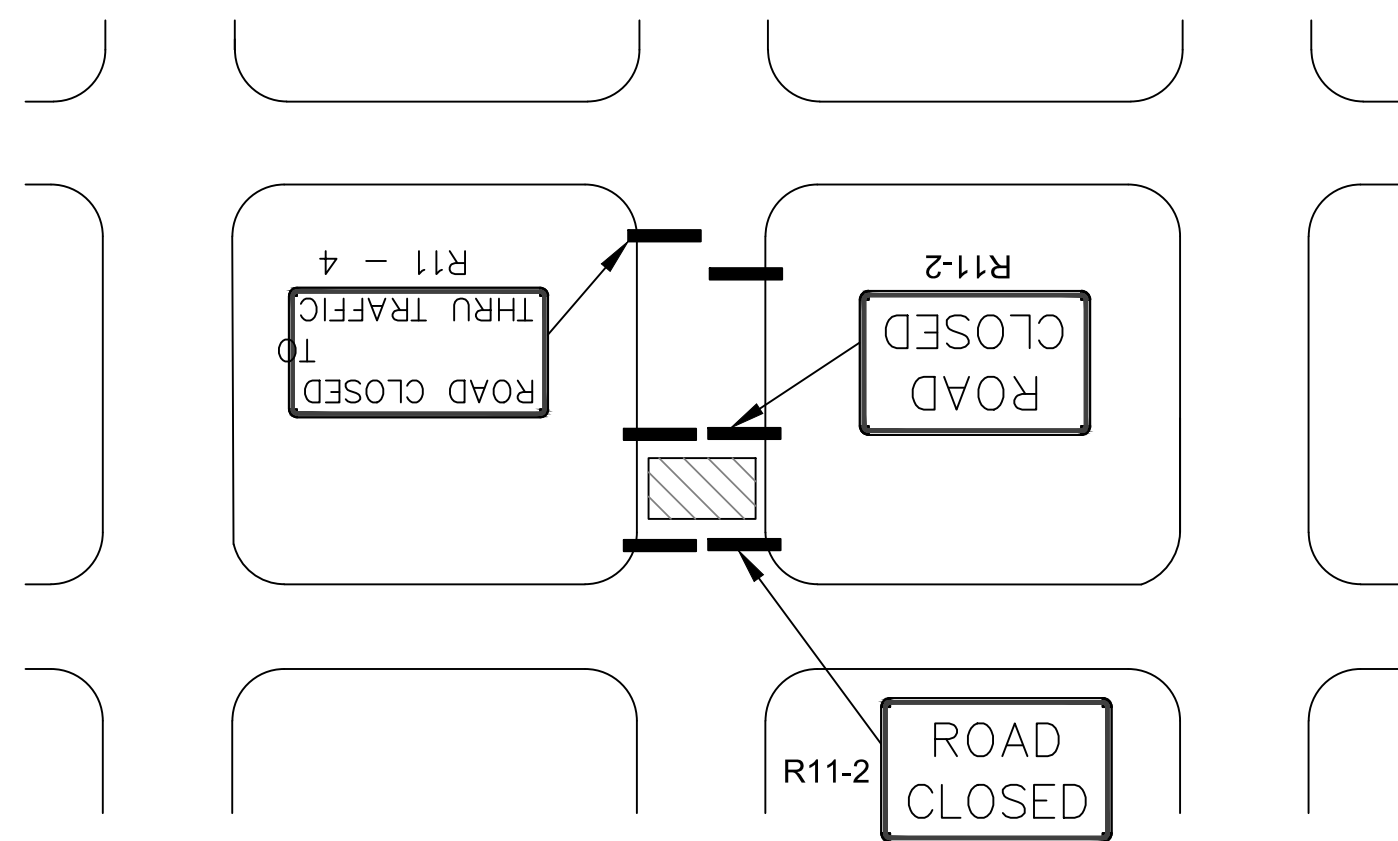
STREET IMPROVEMENT
 CITY OF TOPEKA
 SE INDIANA STREET

TRAFFIC CONTROL
 PHASE 1-D

DATE: Feb. 2026
 SHEET: 35 of 66
 PROJ.: 841099.09
501107.10

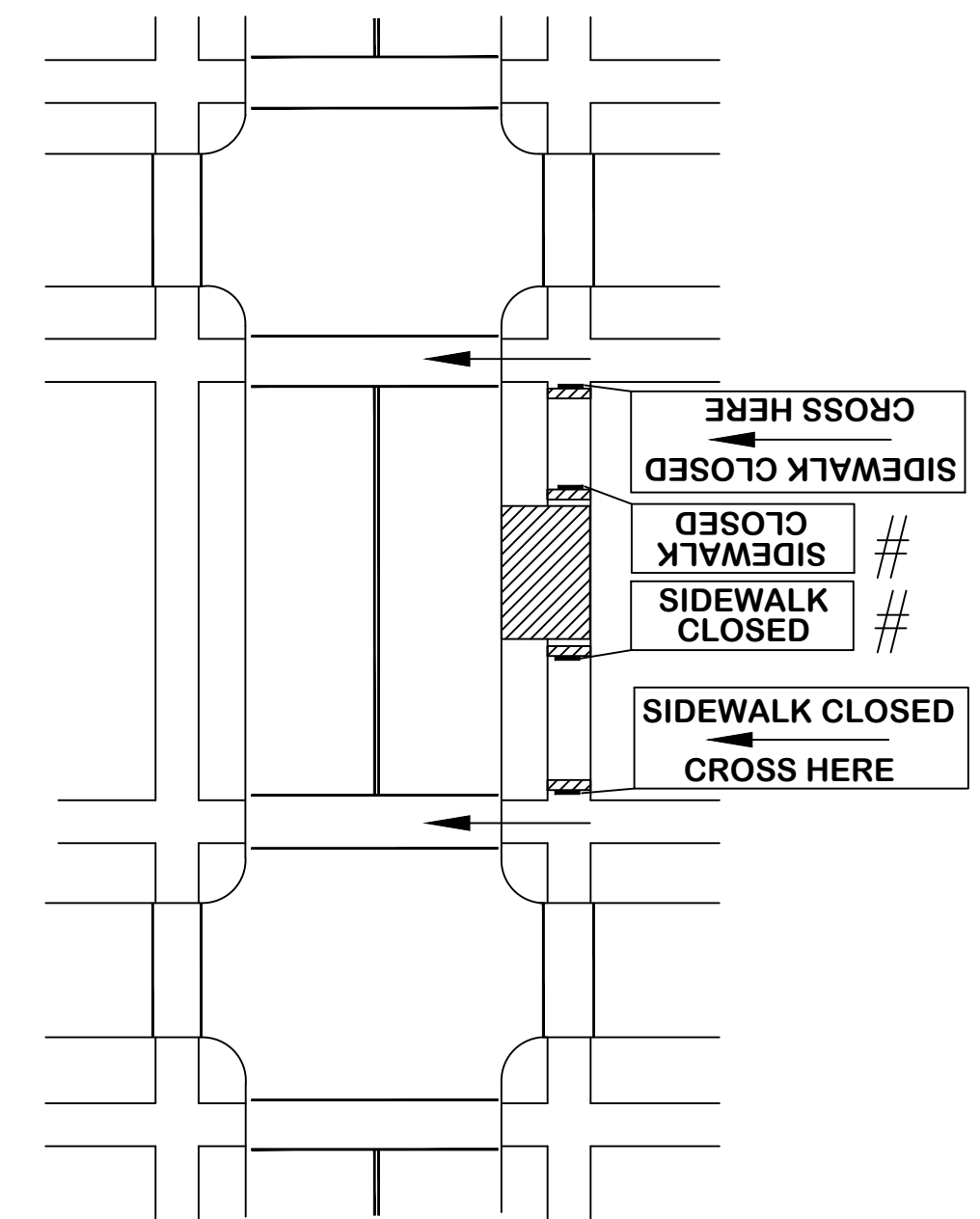


**FIGURE - 118 B (1)
CONSTRUCTION WORK ON RESIDENTIAL / LOCAL STREETS**

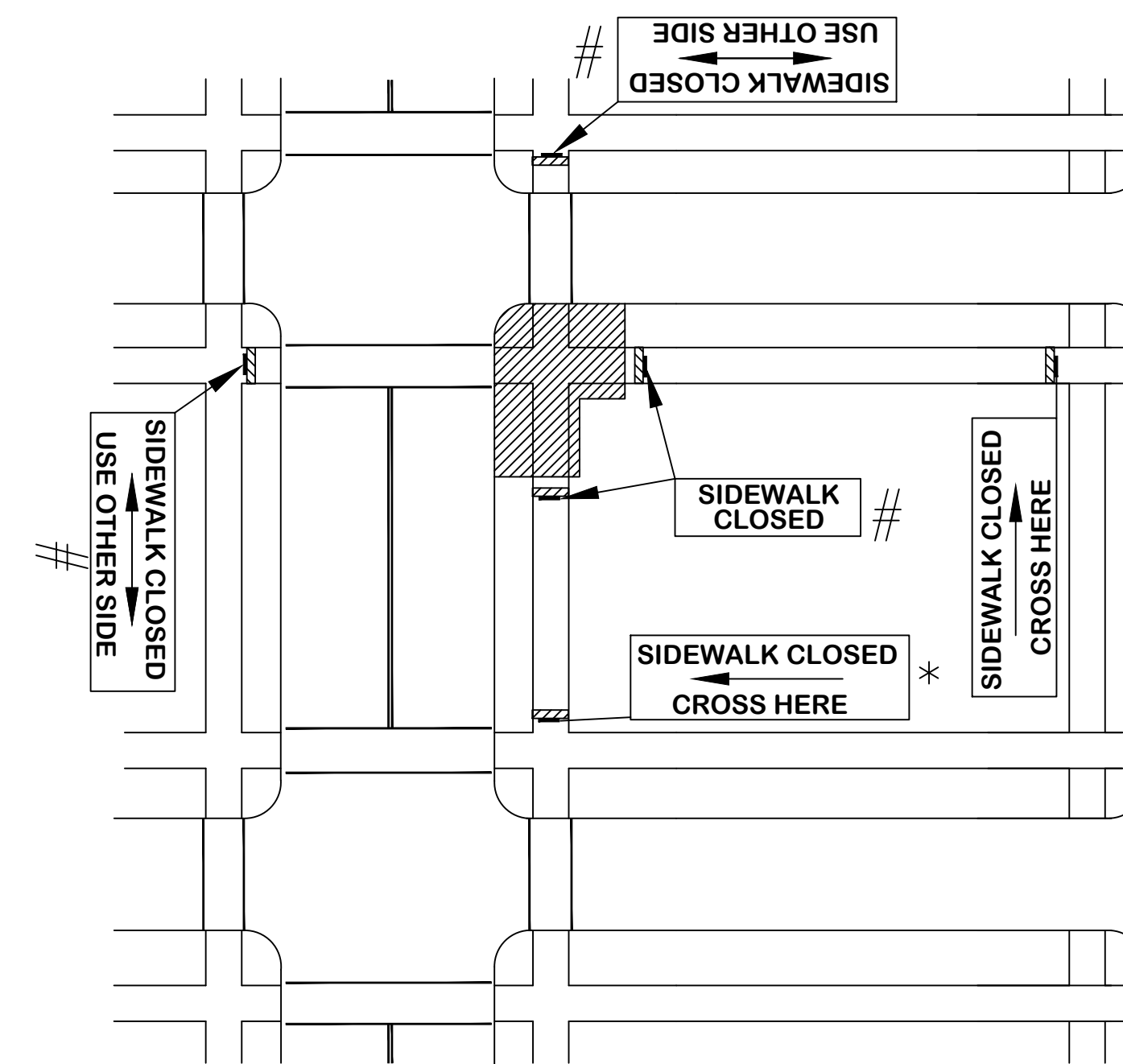


Need for Detour will be determined by the Engineer. Collector Streets cannot be detoured onto local or residential streets.

**FIGURE - 118 B (2)
CLOSURE OF RESIDENTIAL / LOCAL STREETS**



**FIGURE - 118 B (3)
MID-BLOCK SIDEWALK CLOSURE
WITH PEDESTRIAN DETOUR**



**FIGURE - 118 B (4)
CORNER SIDEWALK CLOSURE
WITH PEDESTRIAN DETOUR**

* ADVANCE SIGNS TO BE PLACED ON TYPE I OR TYPE II BARRICADES OR POST MOUNTED. PLACEMENT SHALL BE SUCH THAT SO THAT AT LEAST 48" OF SIDEWALK IS AVAILABLE FOR PEDESTRIAN USE.

SIGNS TO BE PLACED ON CONTINUOUS DETECTABLE DEVICES.

LEGEND	
— = SIGN	◀◀◀◀ = ARROW PANEL BOARD
— = TYPE III BARRICADE	▨ = WORK SPACE
○ = CHANNELIZING DEVICES	⏏ = FLAGGER

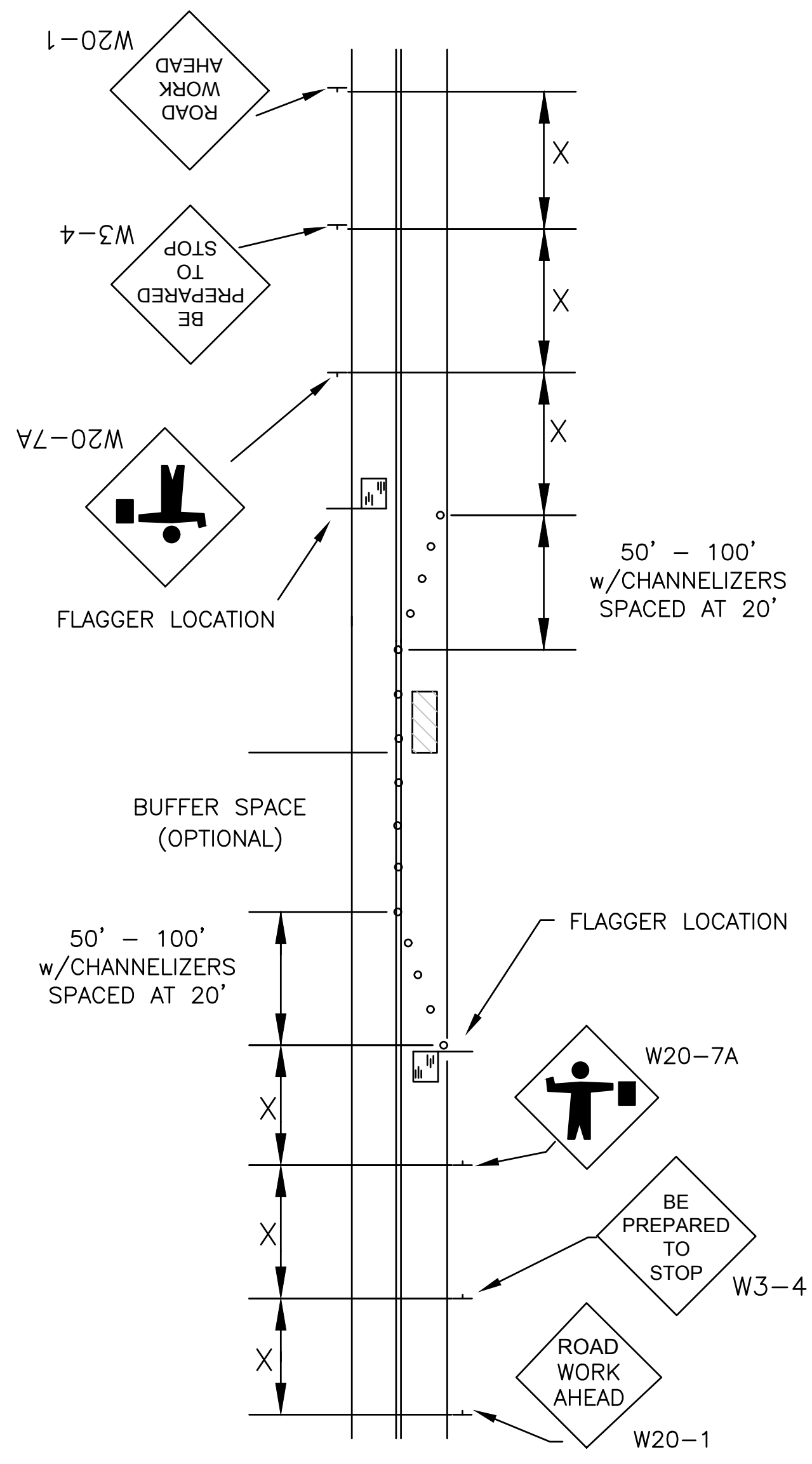
NO.	DATE:	REVISION	BY:	APP'D
1	10/20/30	MAJOR REVISION	SU	KRE

DRAWN BY: Shoeb Uddin
APP'D BY: Kristi Ericksen

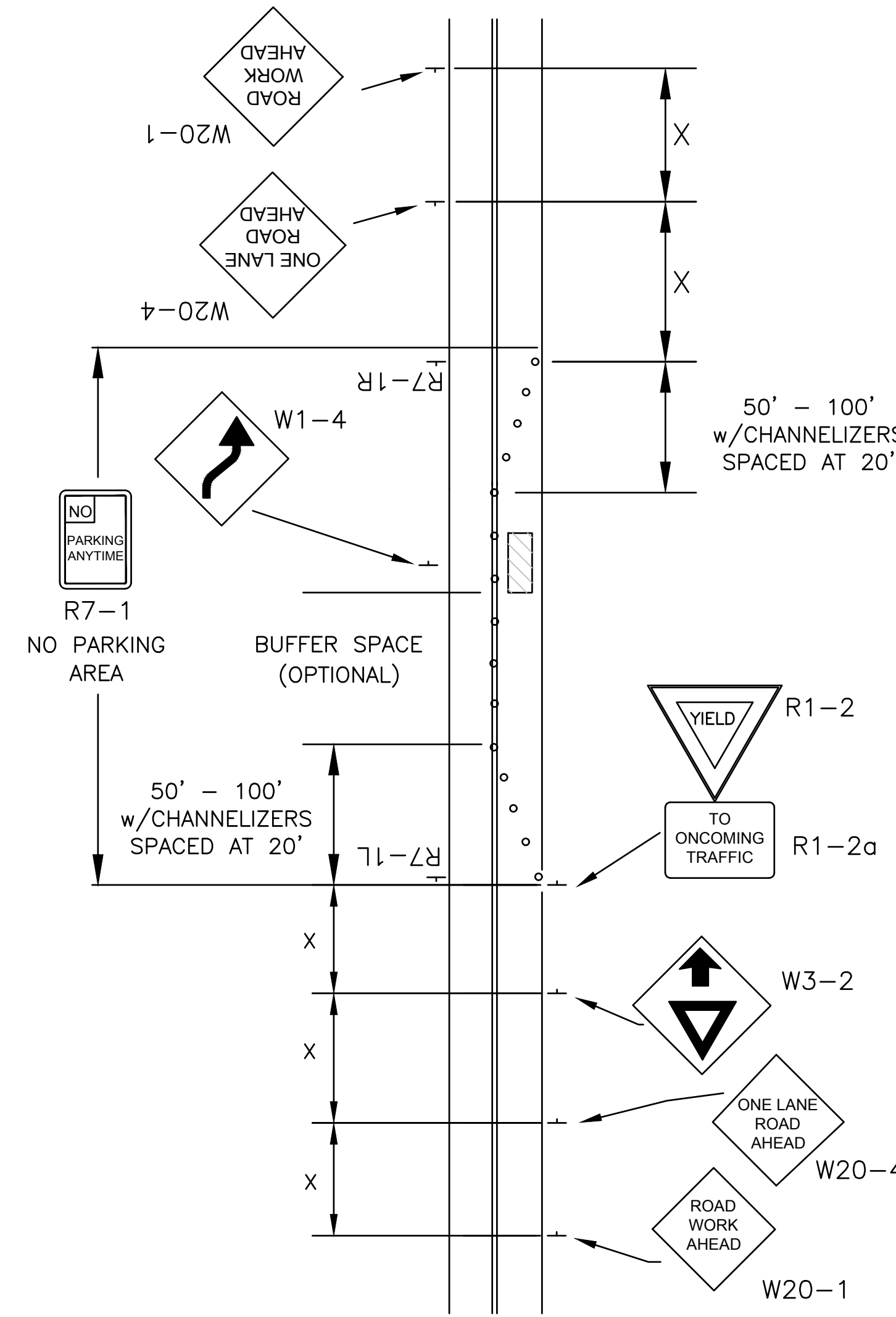


STANDARD DETAILS
DT - 118 B

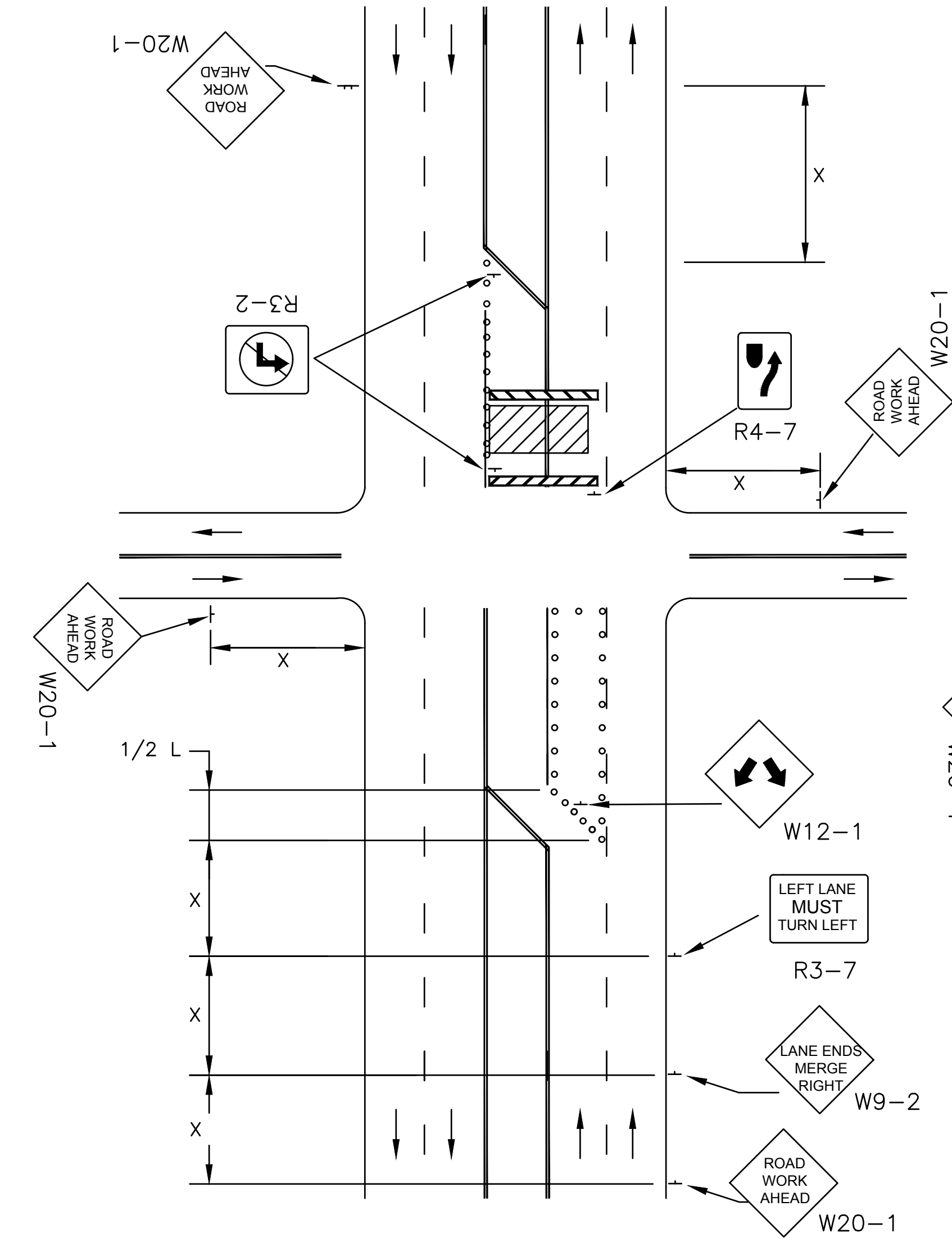
TRAFFIC CONTROL
LOCAL STREET / SIDEWALK CLOSURES



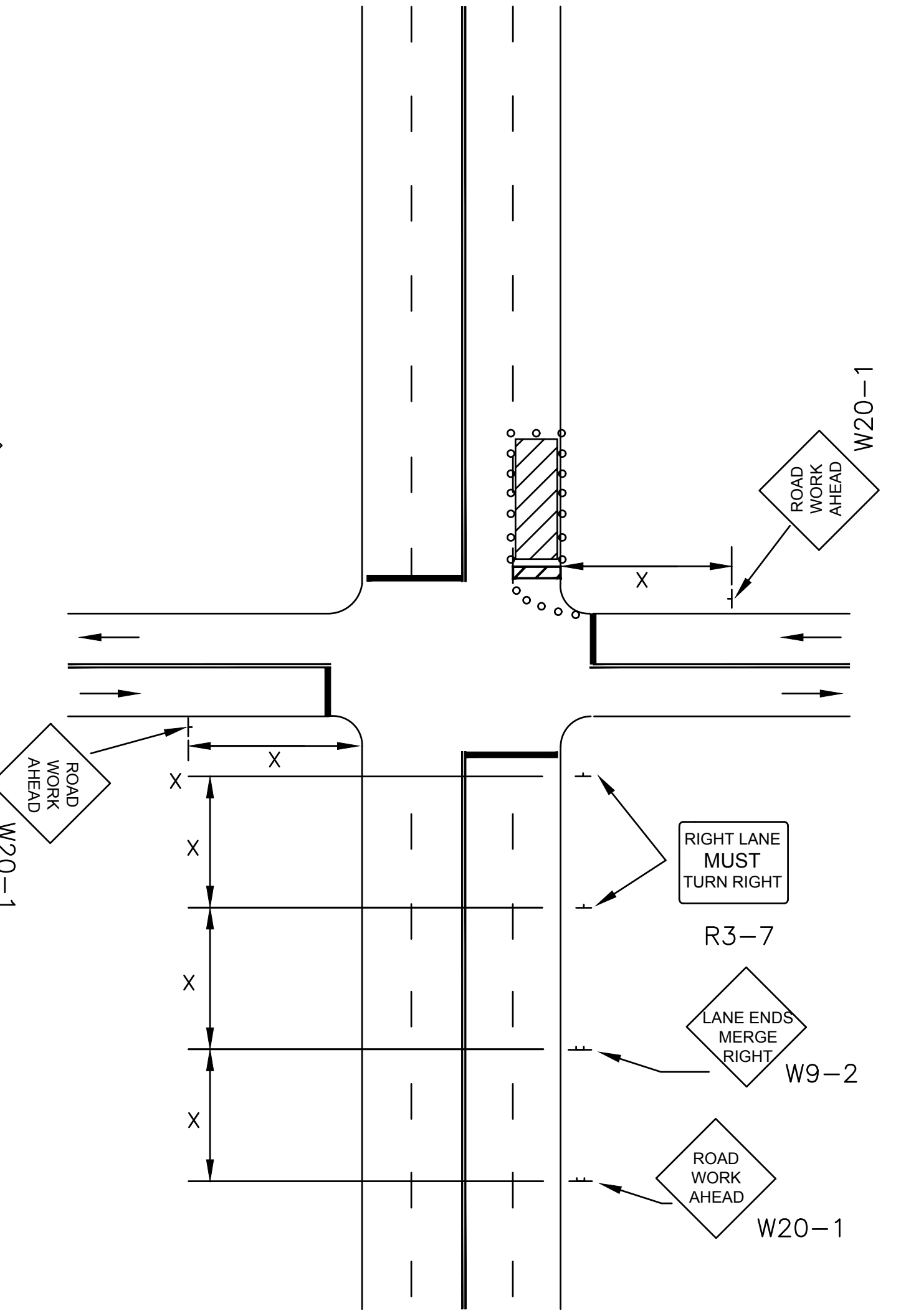
**LANE CLOSURE ON TWO-LANE ROAD
W/ FLAGGER, DAYTIME ONLY**



**LANE CLOSURE ON TWO-LANE ROAD
WITH LOW TRAFFIC VOLUMES
(PRIOR APPROVAL REQUIRED)**



**MULTIPLE LANE CLOSURE AT AN
INTERSECTION**



**RIGHT -HAND LANE CLOSURE ON THE
FAR SIDE OF AN INTERSECTION**

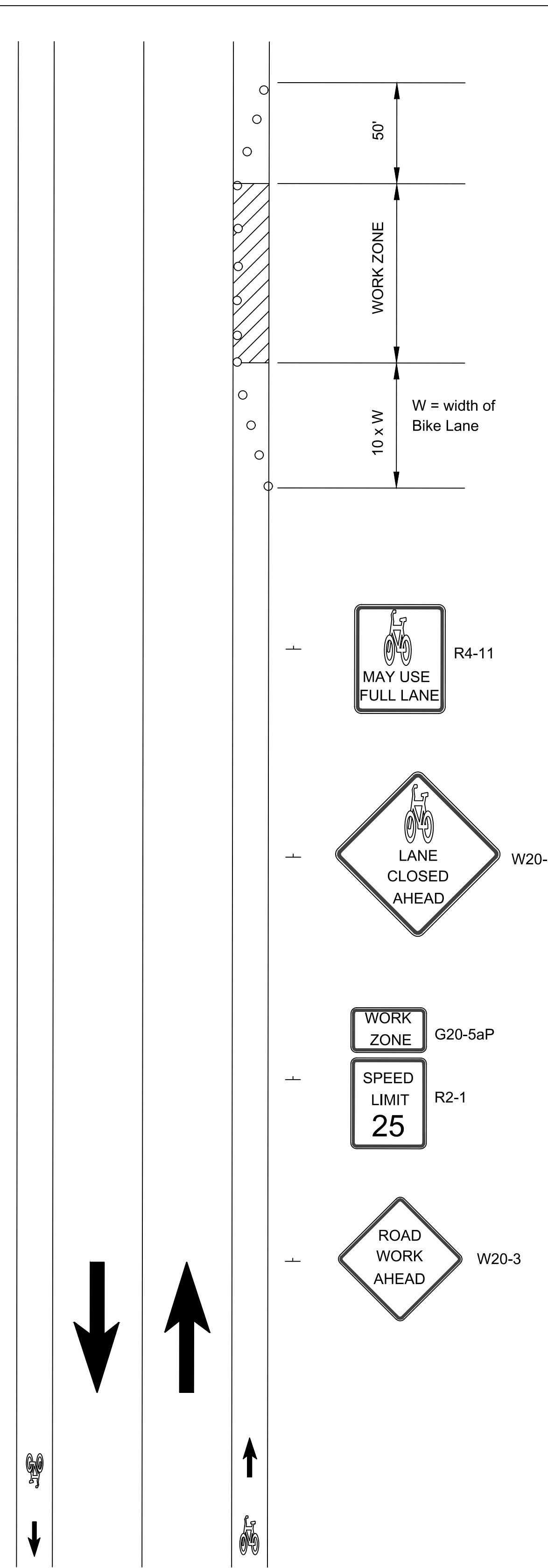
REFER TO SHEET DT-118 FOR TAPER LENGTH(L) AND SIGN SPACING(X) VALUES

NO.	DATE:	REVISION	BY:	APP'D
2	08/06/15	REMOVE W4-7 & REPLACE WITH W9-2	KAP	TLC
1	01/30/12	UPDATE SPECIFICATIONS	KAP	LGV

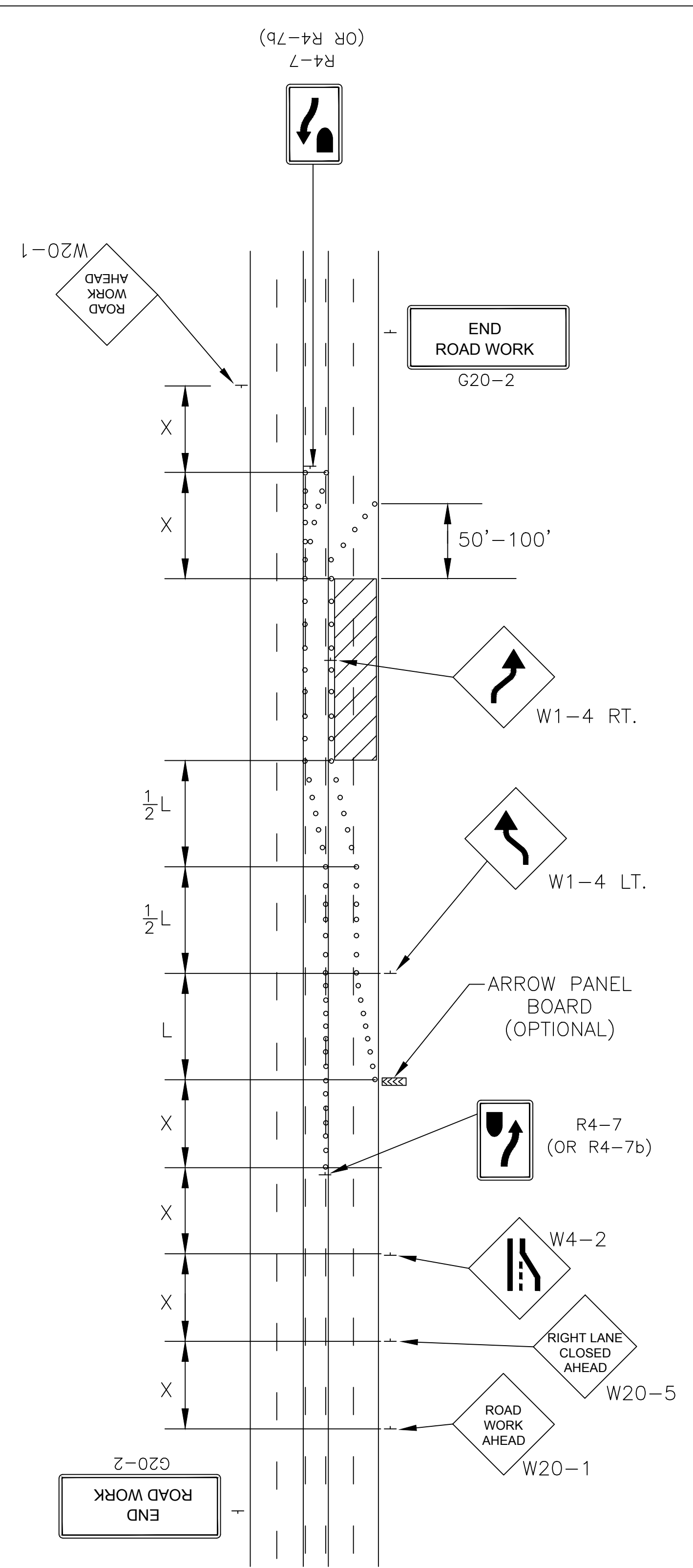
DRAWN BY: K.PELTON
APP'D BY: T. CODER

TOPEKA
Public Works
ENGINEERING
620 SE MADISON STREET - 2nd FLR. • TOPEKA, KS 66607
Phone: (785) 368-3842 • Fax: (785) 368-3881

TRAFFIC CONTROL

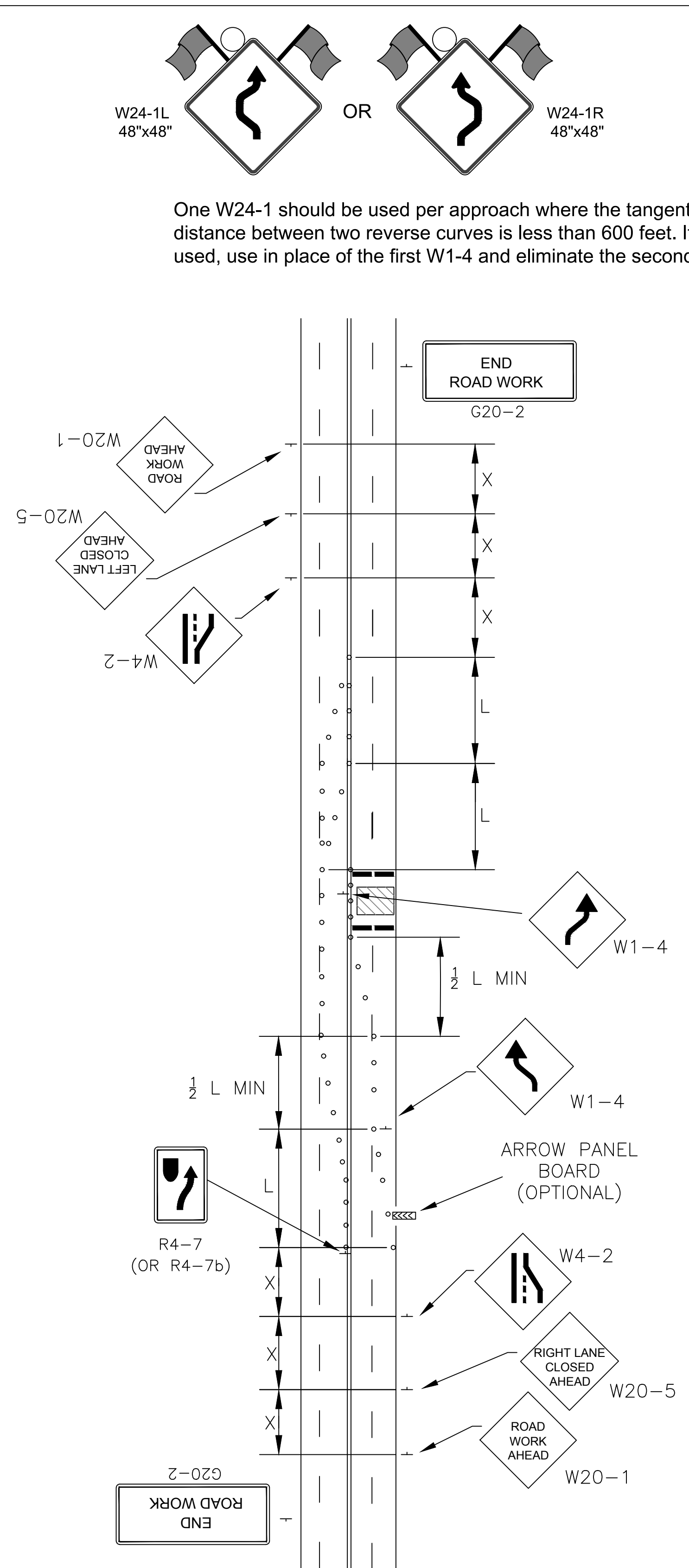


**FIGURE - 120 A (1)
BIKE LANE CLOSURE**

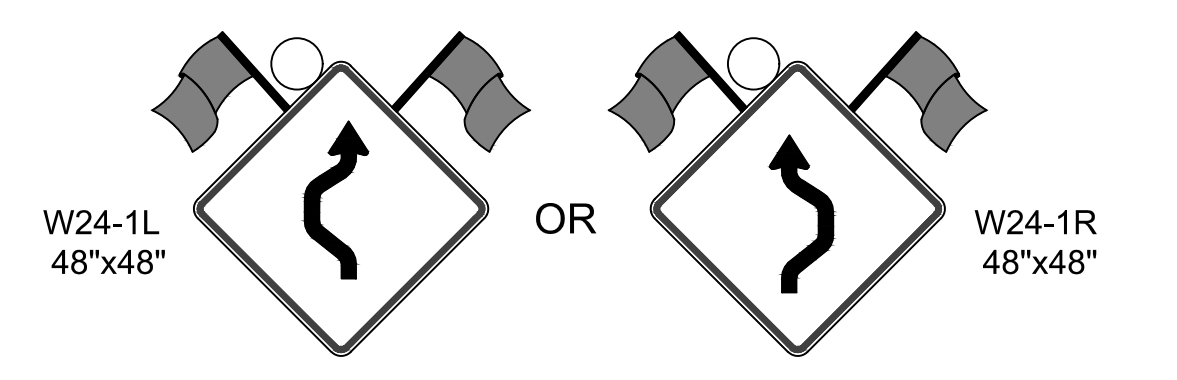


**FIGURE - 120 A (2)
FIVE LANE ROADWAY
w/ TWO LANES CLOSED**

(BASED ON SPEED LIMIT OF 40mph
AND LANE WIDTH OF 12')

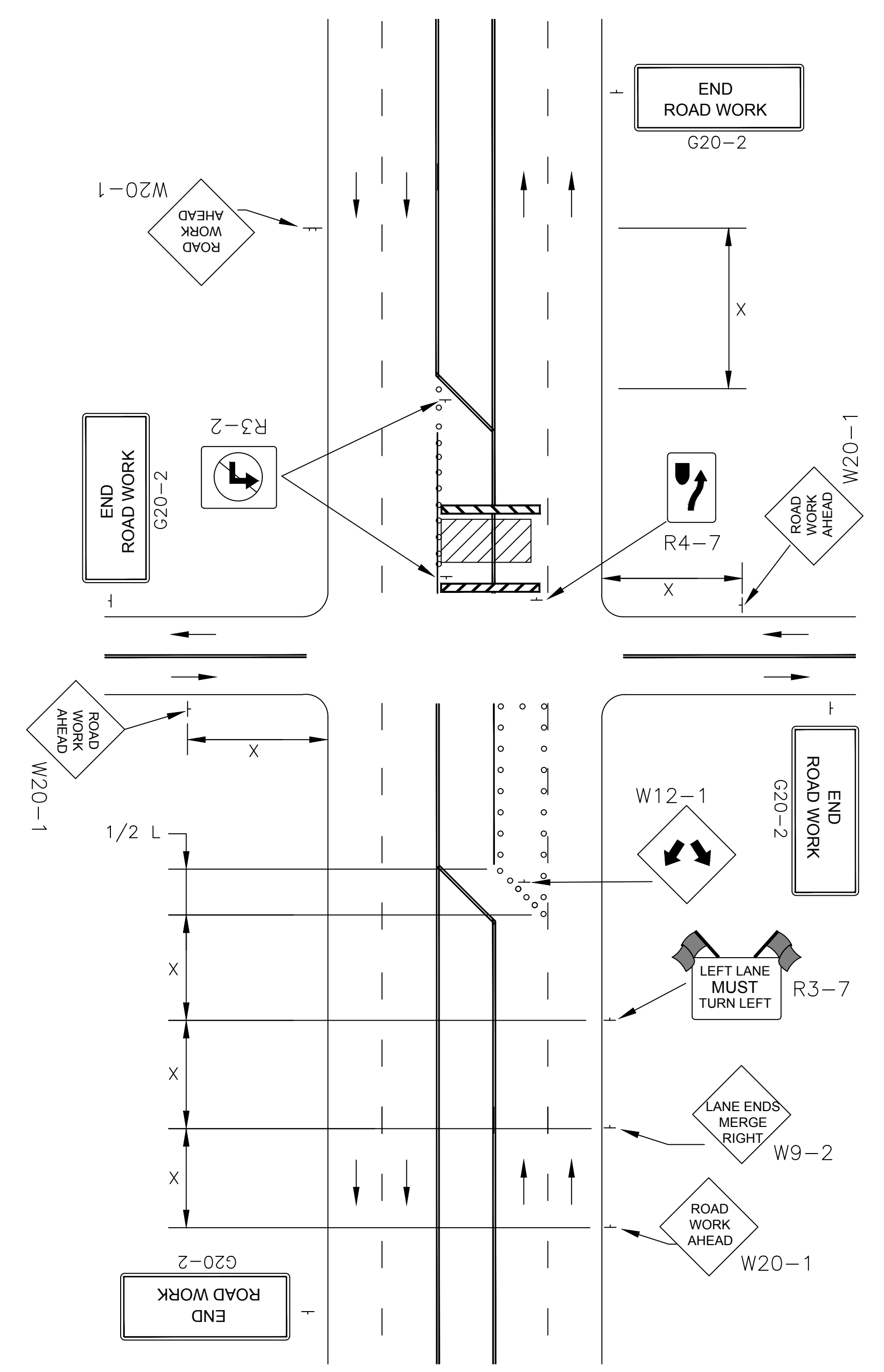


**FIGURE - 120 A (3)
4-LANE UNDIVIDED ROADWAY-HALF
ROADWAY IS CLOSED**



One W24-1 should be used per approach where the tangent distance between two reverse curves is less than 600 feet. If used, use in place of the first W1-4 and eliminate the second.

NOTE
REFER TO SHEET DT-118 FOR TAPER LENGTH (L),
BUFFER SPACE AND SIGN SPACING (X) VALUES



**FIGURE - 120 A (4)
MULTIPLE LANE CLOSURE AT AN INTERSECTION**

LEGEND	
—+— = SIGN	◀◀◀◀ = ARROW PANEL BOARD
— = TYPE III BARRICADE	▨ = WORK SPACE
○ = CHANNELIZING DEVICES	⏏ = FLAGGER

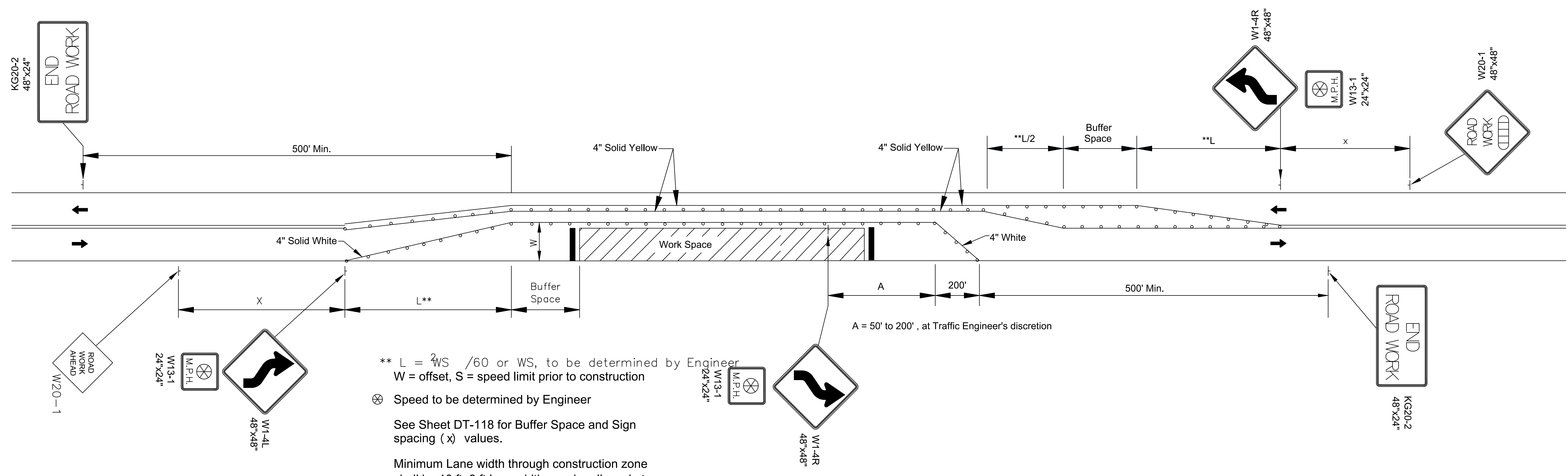
NO.	DATE:	REVISION	BY:	APP'D
1	10/30/20	MAJOR REVISION	SU	KRE

DRAWN BY: Shoeb Uddin
APP'D BY: Kristi Erickson



STANDARD DETAILS
DT - 120 A

TRAFFIC CONTROL
MULTI LANE CLOSURE
BIKE LANE CLOSURE



** $L = \frac{WS}{60}$ or WS , to be determined by Engineer
 W = offset, S = speed limit prior to construction
 ⊗ Speed to be determined by Engineer
 See Sheet DT-118 for Buffer Space and Sign spacing (x) values.
 Minimum Lane width through construction zone shall be 10 ft. 9 ft lane width may be allowed at Traffic Engineer's discretion with appropriate advanced warning sign.

FIGURE - 120 B (1)
ROAD WORK ON WIDE TWO
LANE ROADWAY

LEGEND	
	= SIGN
	= TYPE III BARRICADE
	= CHANNELIZING DEVICES
	= ARROW PANEL BOARD
	= WORK SPACE
	= FLAGGER

NO.	DATE:	REVISION	BY:	APP'D
1	10/30/20	FULL REVISION	SU	KRE

DRAWN BY: Shoeb Uddin
 APP'D BY: Kristi Ericksen

TOPEKA
Public Works
ENGINEERING
 620 SE MADISON STREET - 2ND FLR. • TOPEKA, KS 66607
 Phone: (785) 368-3842 • Fax: (785) 368-3881

STANDARD DETAILS
 DT - 120 B

TRAFFIC CONTROL
 CONSTRUCTION ON WIDE TWO LANE ROAD